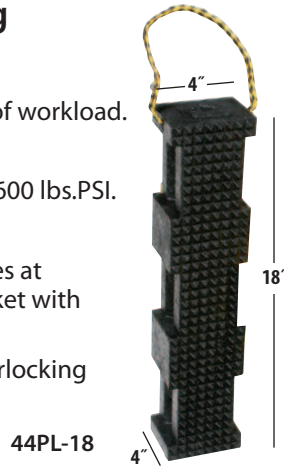


Cribbing Products Stabilize Your Load for Maximum Safety and Efficiency

Fort Worth, Texas • 1-800-433-2212 • www.bluffmanufacturing.com

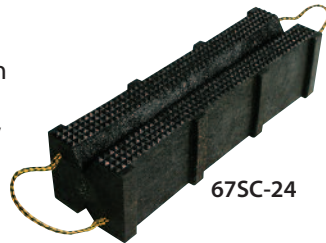
Dura Crib® Profile Cribbing

- All pieces interlock.
- Designed for ultimate stabilization of workload.
- Blocks heavy machinery.
- Zero wood: non-splitting. Rated to 600 lbs.PSI.
- Resists oil and gasoline absorption.
- Pyramid surface securely locks pieces at any angle; only product on the market with this flexibility and security.
- Each piece has 2 surfaces and 3 interlocking side notches for secure stacking.
- 50 year warranty.



Super Crib® Cribbing

- All the benefits of Dura Crib® in a larger profile
- Most popular size: 6" x 7" x 24"



Step Chocks

When Space is Limited, Select Stop Chocks for Maximum Stabilization

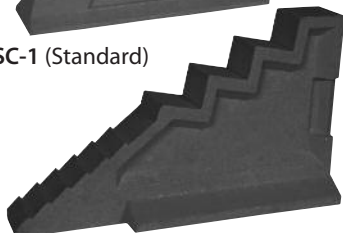
- Fastest way to stabilize.
- Available in 3 sizes:
 - Standard and Medium for forklifts and small vehicles
 - Giant chock for trucks and buses



PART#	BASE	WIDTH	HGT	WGT
SC-1	24 3/4" x 5 3/4"	3 3/4"	10 3/4"	16 lbs.
SC-2	29 1/2" x 9"	4 1/2"	17 1/4"	35 lbs.
SC-3	31 1/2" x 11"	5"	22"	64 lbs.



SC-1 (Standard)



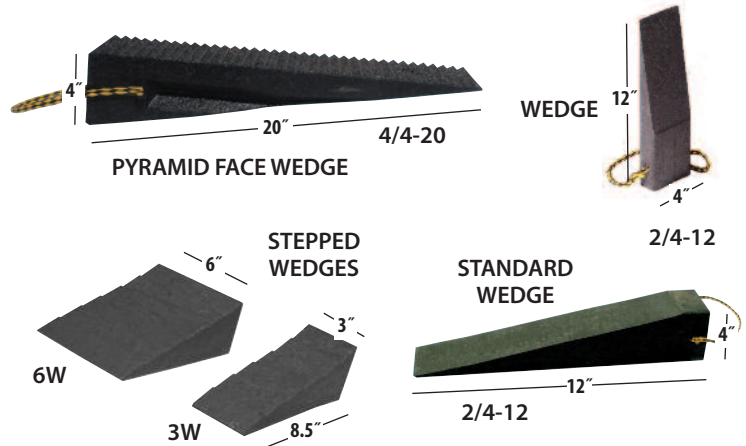
SC-2 (Medium)



SC-3 (Giant)

Wedges

- Wedges lock load for tightest fit.
- Designed to work with interlocking Dura Crib® products – slide to lock in place or use all by themselves.
- Seals differential space.
- Stepped wedges "bite" into load to eliminate shifting.



Forklift Stabilization Safety Kits

Provides Stability when Performing Maintenance on Fork Lifts

- Hazardous energy control.
- Forklift Kit A contains 19 pieces including an easy-to-carry bag, and the basic composite cribbing and wheel chocks useful for safely working on forklifts.
- Sizes ranging from 9" to 48" support forklift base and mast.
- In-channel mast support is true 4" x 4" x 4" (not nominal) to help insure secure fit.
- Wheel Chocks included to secure forklift from rolling.
- 3-point blocking allows for 3 different heights: 6", 8" or 12".
- 2 clamps included with each kit to secure mast blocks to the mast.

Forklift Kit B



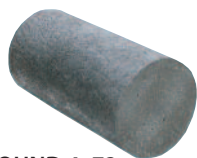
LK-A (LK-B and LK-C not shown)



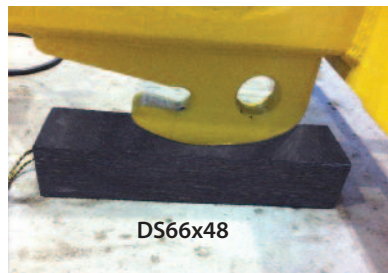
Dura Stat® Composite Lumber for Static Loads

Smooth pieces are molded then cut for indoor/outdoor use

- If slippage is an issue, use Dura Crib®.
- Available in cylindrical, square and rectangular shapes.
- Ideal for outside storage instead of railroad ties.
- Proprietary HDPE blend provides consistent, high-tensile strength.
- Profiles up to 12" x 16".
- Lengths up to 24'.
- 50 Year Warranty.



DS/ROUND 4x72



Sheet Metal Blocking

Provides spacing for easy pickup with forklift.

- Choose 4" x 4" or 2" x 4".
- Various lengths available.

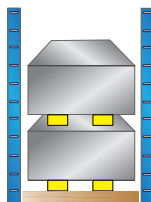


DS44x96



Tool & Die Storage Blocking
Replaces traditional wood blocking

DS24x96



Hose Bridges for Vehicles & Pedestrians



Shown:
2 x HBS +
6 x HJ Hose Joiner
Standard Color Black; Yellow Optional

Grit tiles are screwed into the top for non-slip walking surface.

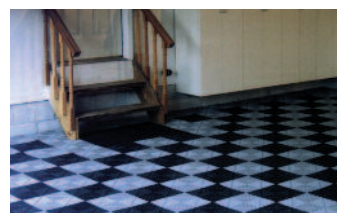


Anti-Slip & Anti-Fatigue Mats

"Build Your Own" & "Mat-in-a-Box®"
Tile Matting Systems

100% Recycled material made in the USA

- Complete modular, slip-resistant ¾" thick tile and ramp systems connect to each other on all sides; ideal for fitting irregularly-shaped work areas.
- Mat-in-a-Box® is shipped ready to use right out of the box. Countersunk screw holes to prevent mat from walking.
- Choose Plain, Supersoft, Dura Grit®, Grit Top® hard or solid-top tile.
- Ask about our buyback program. Used mats will be bought back at the then-current price for PVC.
- 5 Year Warranty on most tiles; Grit Top® and Dura Grit® tiles have 1 Year Warranty program.



ORDER IT YOUR WAY! (15 colors plus black)

BLUE	BROWN	BURGUNDY	DARK GRAY	FOREST GREEN	TAUPE	YELLOW
GREEN	LIGHT GRAY	ORANGE	POOL BLUE	RED	TAN	TERRA COTTA
WHITE	BLACK	Colors available on Plain Tiles only, not Dura Grit® or Grit Top® Tiles.				

Shower & Eyewash Station Mats

The perfect Mat-in-a-Box® for emergency eyewash and shower stations, and fire boxes

- Standard matting colors available, but we recommend green matting for eyewash stations, and red matting for firebox stations.

