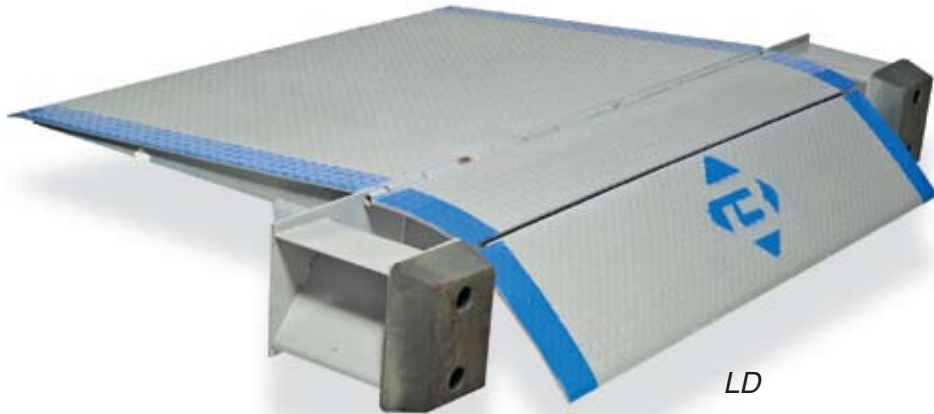




Lo-Dock Levelers



LO-DOCK LEVELER (LD)

- **Raises edge-of-dock levelers to proper working height**
- **Completely assembled; no site welding required**

Now without expensive dock alterations, you can raise the height of your present dock as much as 11". Lo-dock levelers can easily be installed on any concrete dock without welding or modifications. Refrigerated lip is optional. Complete technical information and installation instructions are available upon request.

Bluff's edge-of-dock leveler is designed to have a working range of 5" above and 5" below dock.

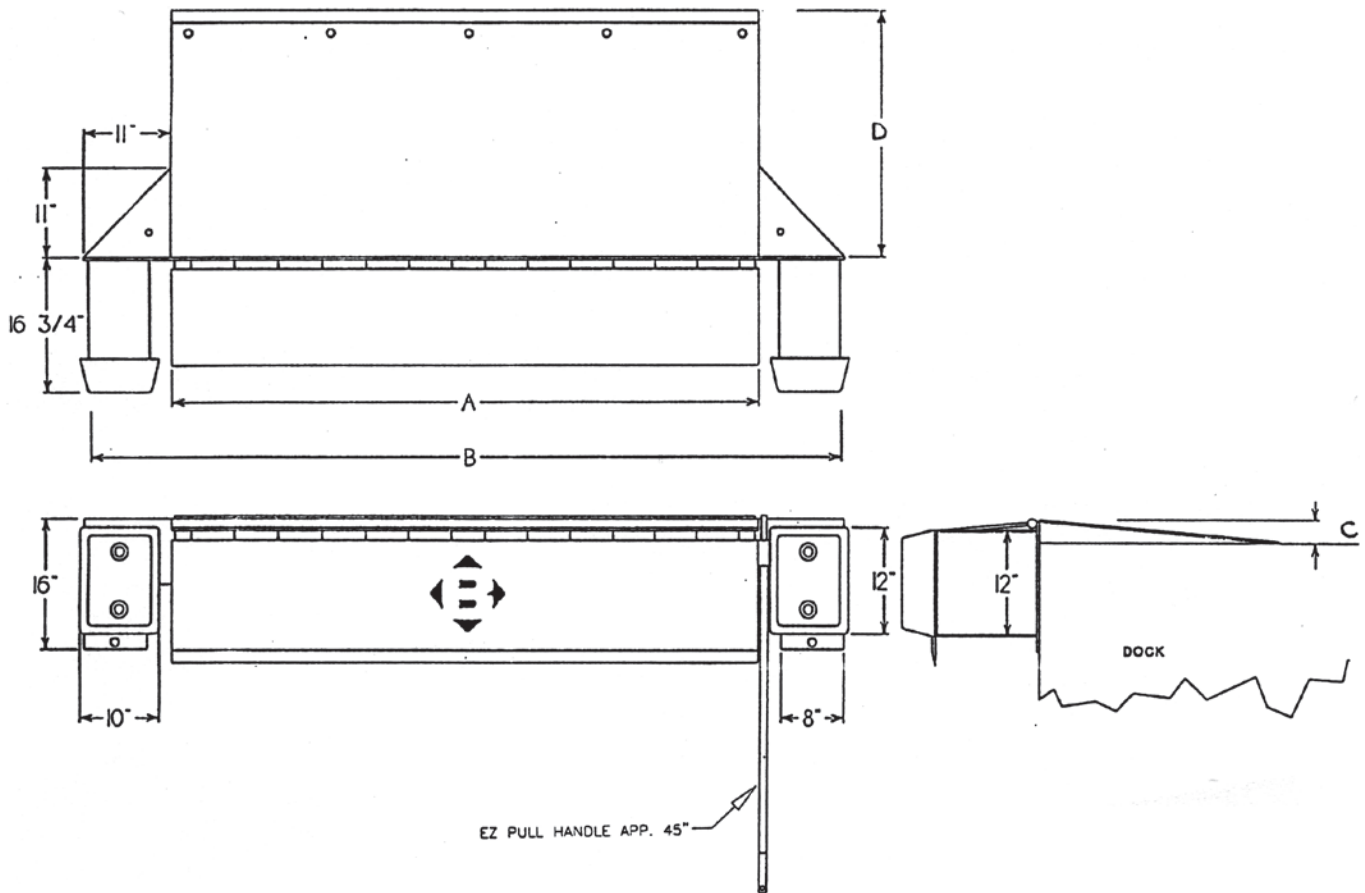
Because of gradability problems, dock levelers are not recommended for use with pallet jacks or stackers.

Available in 20,000 lb. – 30,000 lb. capacities.
Hydraulic Assist available as option.

SERVICE YOU CAN STAND ON

(800) 433-2212 • www.bluffmanufacturing.com • Fax 817-293-7570
1400 Everman Parkway • Suite 156 • Fort Worth, TX 76140

LO-DOCK LEVELERS MODEL LD



MODEL#	A	B	C	D
20LD72-3 25LD72-3	72"	94"	3"	30"
20LD72-5 25LD72-5	72"	94"	5"	48"
20LD72-7 25LD72-7	72"	94"	7"	52"
20LD72-9 25LD72-9	72"	94"	9"	64"
20LD72-11 25LD72-11	72"	94"	11"	78"
20LD78-3 25LD78-3	78"	100"	3"	30"
20LD78-5 25LD78-5	78"	100"	5"	48"
20LD78-7 25LD78-7	78"	100"	7"	52"
20LD78-9 25LD78-9	78"	100"	9"	64"